



**Water Monitoring Result at M5B - Central Cooling Water Intake Group
Mid-Flood Tide**

Date	Time	Weather Condition	Sampling Depth	m	Water Temperature		Average	pH		Average	Salinity		Average	DO Saturation		Average	DO		Average	Turbidity		Average	Suspended Solids	
					°C			-			ppt			%			mg/L			NTU			mg/L	
					Value	Value		Value	Value		Value	Value		Value	Value		Value	Value		Value	Value		Value	Value
1/2/16	10:13	Rainy	Middle	3.5	15.20	15.20	15.35	8.34	8.34	8.36	30.49	30.49	30.72	90.4	89.0	88.3	7.47	7.36	7.30	7.60	7.54	7.57	4	3.00
	10:15		Middle	3.5	15.50	15.50		8.38	8.38		30.95	30.95		87.6	86.1		7.24	7.12		7.55	7.58		2	
3/2/16	15:15	Fine	Middle	3.5	15.70	15.70	15.70	8.48	8.48	8.50	31.37	31.37	31.37	95.6	96.0	95.4	7.87	7.88	7.84	6.89	6.91	6.92	2	3.00
	15:17		Middle	3.5	15.70	15.70		8.51	8.51		31.37	31.37		95.1	95.0		7.81	7.80		6.93	6.93		4	
5/2/16	12:20	Fine	Middle	3.5	16.60	16.60	16.65	8.42	8.42	8.44	31.35	31.35	31.35	99.1	98.4	98.0	7.98	7.93	7.87	9.17	9.17	9.15	<2	<2
	12:22		Middle	3.5	16.70	16.70		8.46	8.46		31.35	31.35		97.8	96.5		7.78	7.77		9.13	9.12		<2	
11/2/16	8:24	Fine	Middle	3.5	16.30	16.30	16.35	8.41	8.41	8.42	30.81	30.81	30.81	86.8	86.6	87.6	7.06	7.08	7.13	9.23	9.24	9.25	<2	2.00
	8:26		Middle	3.5	16.40	16.40		8.43	8.43		30.80	30.80		88.5	88.3		7.20	7.18		9.24	9.27		2	
13/2/16	10:08	Fine	Middle	3.5	18.00	18.00	18.00	8.36	8.36	8.38	29.39	29.39	29.83	90.8	88.3	87.8	7.18	6.99	6.94	9.68	9.49	9.57	8	7.50
	10:10		Middle	3.5	18.00	18.00		8.39	8.39		30.27	30.27		86.9	85.2		6.87	6.73		9.52	9.59		7	
15/2/16	10:35	Fine	Middle	3.0	15.80	15.80	15.80	8.41	8.41	8.43	30.16	30.16	30.09	96.0	95.2	95.3	7.92	7.85	7.86	5.75	5.88	5.86	4	4.00
	10:37		Middle	3.0	15.80	15.80		8.44	8.44		30.01	30.01		94.6	95.3		7.80	7.86		5.91	5.90		4	
17/2/16	10:46	Fine	Middle	3.5	15.50	15.50	15.50	8.42	8.42	8.44	30.97	30.97	31.01	93.3	93.2	93.5	7.69	7.69	7.71	6.15	6.16	6.17	<2	2.00
	10:48		Middle	3.5	15.50	15.50		8.46	8.46		31.04	31.04		94.0	93.4		7.75	7.71		6.17	6.18		2	
19/2/16	14:42	Cloudy	Middle	3.5	16.20	16.20	16.15	8.43	8.43	8.45	30.61	30.61	30.84	94.6	92.7	91.8	7.72	7.57	7.50	6.14	6.26	6.20	2	2.50
	14:44		Middle	3.5	16.10	16.10		8.46	8.46		31.07	31.07		90.4	89.3		7.42	7.28		6.22	6.17		3	
22/2/16	11:10	Cloudy	Middle	3.5	15.80	15.80	15.85	8.49	8.49	8.51	30.83	30.83	30.83	97.8	98.0	97.8	8.03	8.08	8.03	3.87	3.81	3.80	2	2.50
	11:12		Middle	3.5	15.90	15.90		8.52	8.52		30.83	30.83		97.6	97.6		8.00	8.00		3.78	3.73		3	
24/2/16	20:05	Cloudy	Middle	3.5	15.30	15.30	15.32	8.58	8.58	8.59	30.84	30.84	30.84	66.5	66.3	66.2	5.52	5.50	5.49	3.99	3.86	3.73	4	4.00
	20:06		Middle	3.5	15.30	15.38		8.59	8.59		30.84	30.84		66.1	65.9		5.48	5.47		3.56	3.52		4	
26/2/16	9:05	Fine	Middle	3.5	15.40	15.40	15.40	8.49	8.49	8.51	30.61	30.61	30.62	97.3	98.5	98.1	8.07	8.17	8.14	3.51	3.48	3.47	5	4.50
	9:07		Middle	3.5	15.40	15.40		8.52	8.52		30.62	30.62		98.7	97.9		8.19	8.12		3.50	3.38		4	
29/2/16	9:09	Fine	Middle	3.5	16.50	16.50	16.40	8.35	8.35	8.38	30.14	30.14	30.37	97.0	94.7	94.3	7.97	7.71	7.69	3.94	3.99	3.68	4	4.50
	9:11		Middle	3.5	16.30	16.30		8.40	8.40		30.59	30.59		93.4	92.0		7.60	7.49		3.54	3.24		5	

Remarks:
Single underline denotes exceedance over Action Level.
Double underline denotes exceedance over Limit Level.



**Water Monitoring Result at M5B - Central Colling Water Intake Group
Mid-Ebb Tide**

Date	Time	Weather Condition	Sampling Depth		Water Temperature		pH			Salinity		DO Saturation		DO		Turbidity		Suspended Solids						
					°C		-			ppt		%		mg/L		NTU		mg/L						
					Value	Average	Value	Average	Value	Average	Value	Average	Value	Average	Value	Average	Value	Average	Value	Average				
1/2/16	17:04	Cloudy	Middle	3.5	15.40	15.40	15.50	8.43	8.43	8.45	30.59	30.59	30.62	90.5	90.0	89.6	7.47	7.43	7.40	8.62	8.62	8.62	3	3.00
	17:06		Middle	3.5	15.60	15.60		8.46	8.46		30.65	30.65		89.0	88.9		7.35	7.34		8.62	8.62		3	
3/2/16	20:30	Cloudy	Middle	3.5	14.80	14.80	14.75	8.54	8.54	8.55	31.50	31.55	31.54	82.4	83.9	83.8	6.90	7.02	7.02	3.53	3.43	3.43	<2	2.00
	20:31		Middle	3.5	14.70	14.70		8.55	8.55		31.55	31.55		84.4	84.6		7.06	7.08		3.39	3.37		2	
5/2/16	22:54	Fine	Middle	3.5	14.90	14.90	14.90	8.48	8.48	8.49	31.24	31.24	31.24	85.3	85.1	85.4	7.12	7.10	7.13	1.69	1.66	1.68	2	2.00
	22:55		Middle	3.5	14.90	14.90		8.49	8.50		31.24	31.24		85.4	85.8		7.13	7.15		1.63	1.75		2	
11/2/16	13:30	Fine	Middle	3.5	17.60	17.60	17.35	8.40	8.47	8.44	30.67	30.67	30.76	94.1	93.3	93.2	7.55	7.48	7.47	9.11	9.31	9.20	<2	<2
	13:32		Middle	3.5	17.10	17.10		8.44	8.44		30.85	30.85		93.7	91.6		7.51	7.34		9.24	9.13		<2	
13/2/16	14:51	Fine	Middle	3.5	19.00	19.00	18.70	8.34	8.34	8.36	30.37	30.37	30.36	90.4	89.3	89.3	7.10	7.01	7.01	8.90	8.83	8.82	3	3.00
	14:53		Middle	3.5	18.40	18.40		8.38	8.38		30.34	30.34		88.8	88.5		6.97	6.94		8.77	8.77		3	
15/2/16	16:51	Rainy	Middle	3.0	15.60	15.60	15.55	8.43	8.43	8.44	30.06	30.06	30.06	94.0	94.1	93.8	7.80	7.80	7.80	8.54	8.55	8.54	4	3.50
	16:53		Middle	3.0	15.50	15.50		8.45	8.45		30.05	30.05		93.5	93.7		7.75	7.85		8.54	8.53		3	
17/2/16	20:12	Cloudy	Middle	3.5	15.10	15.10	15.05	8.57	8.57	8.58	31.48	31.48	31.48	84.0	84.6	84.6	6.98	7.03	7.03	1.97	1.94	1.92	2	2.50
	20:13		Middle	3.5	15.00	15.00		8.58	8.58		31.48	31.48		84.9	84.8		7.05	7.04		1.91	1.87		3	
19/2/16	22:15	Cloudy	Middle	3.5	16.00	16.00	16.00	8.47	8.47	8.48	31.21	31.21	31.21	70.8	70.6	70.5	5.78	5.77	5.76	2.78	2.81	2.78	<2	2.00
	22:16		Middle	3.5	16.00	16.00		8.48	8.48		31.21	31.21		70.4	70.2		5.75	5.73		2.87	2.65		2	
22/2/16	17:20	Cloudy	Middle	3.0	16.10	16.10	16.15	8.51	8.51	8.52	30.82	30.82	30.82	97.4	98.1	97.2	7.95	8.00	7.93	5.61	5.75	5.49	4	4.50
	17:22		Middle	3.0	16.20	16.20		8.53	8.53		30.81	30.81		97.8	95.5		7.98	7.79		5.39	5.22		5	
24/2/16	14:08	Fine	Middle	3.5	15.90	15.90	15.90	8.37	8.37	8.39	27.82	27.82	27.82	82.4	82.0	81.4	6.88	6.84	6.79	9.39	9.40	9.39	3	3.50
	14:10		Middle	3.5	15.90	15.90		8.40	8.40		27.81	27.81		81.0	80.3		6.75	6.70		9.41	9.36		4	
26/2/16	13:05	Fine	Middle	3.5	16.60	16.60	16.40	8.40	8.40	8.44	30.76	30.76	30.66	97.1	96.5	96.2	7.96	7.91	7.89	3.14	3.14	3.10	<2	2.00
	13:07		Middle	3.5	16.20	16.20		8.48	8.48		30.55	30.55		95.6	95.6		7.83	7.84		3.09	3.01		2	
29/2/16	16:02	Fine	Middle	3.5	17.70	17.70	17.55	8.32	8.32	8.35	30.39	30.39	30.41	96.6	95.0	94.9	7.72	7.59	7.57	4.04	4.01	3.87	5	5.00
	16:04		Middle	3.5	17.40	17.40		8.38	8.38		30.43	30.43		94.1	93.9		7.51	7.46		3.73	3.69		5	

Remarks:
 Single underline denotes exceedance over Action Level.
 Double underline denotes exceedance over Limit Level.

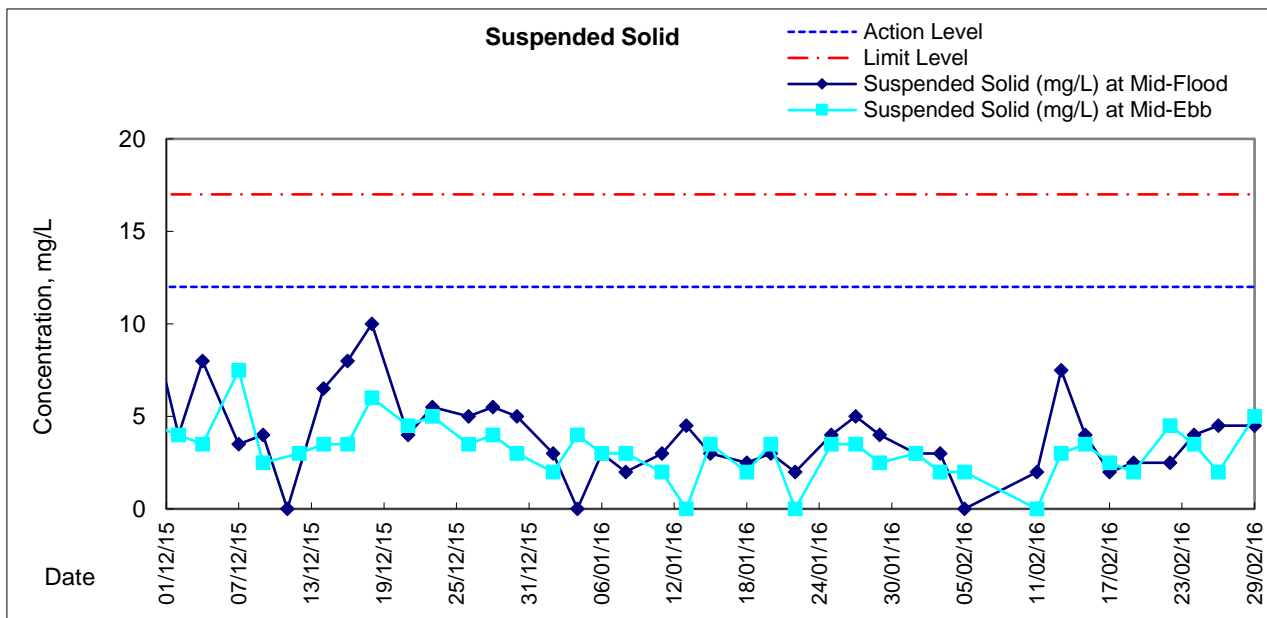
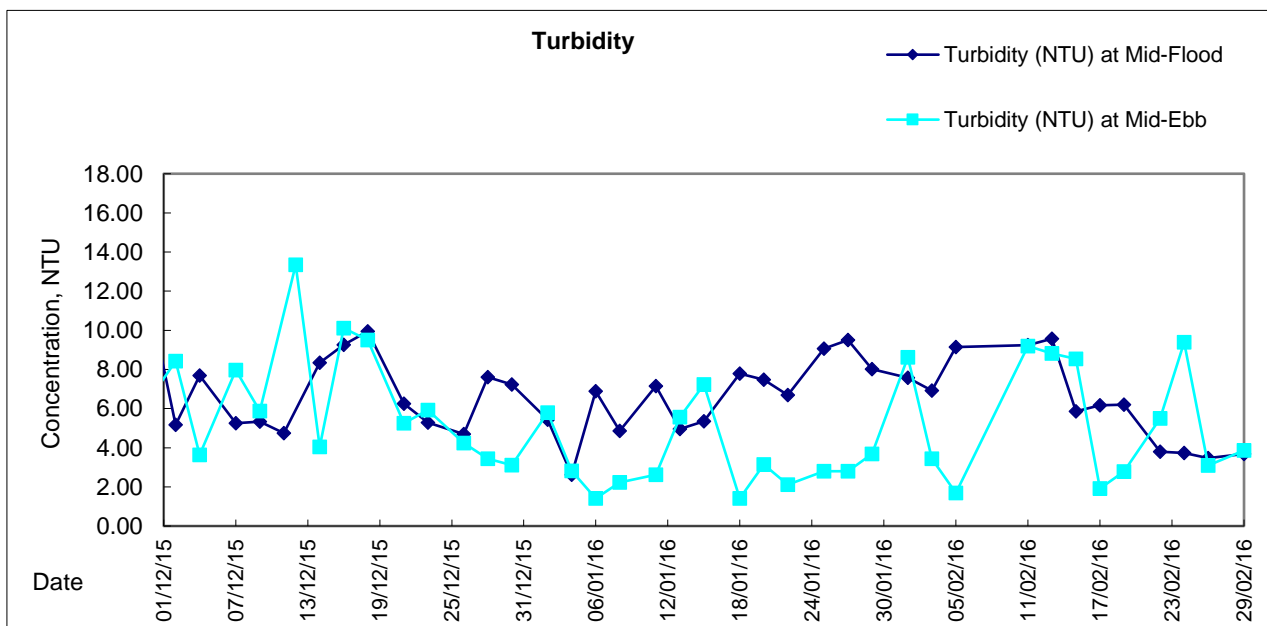
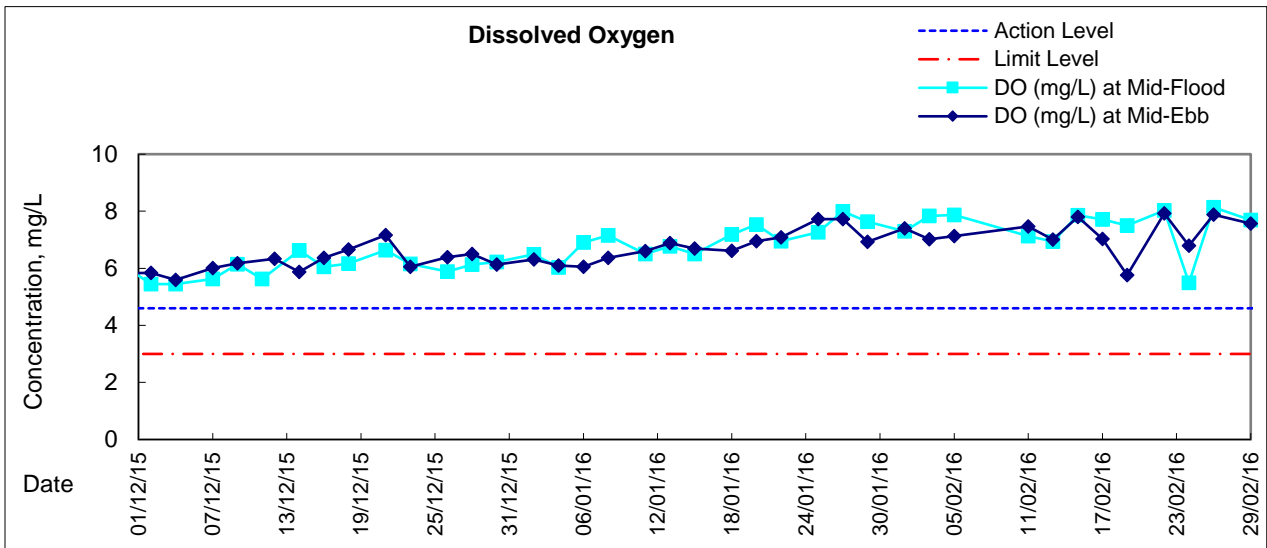


**Water Monitoring Result at Culvert J - Reference Station
Mid-Ebb Tide**

Date	Time	Weather Condition	Sampling Depth		Water Temperature		pH			Salinity		DO Saturation		DO		Turbidity		Suspended Solids						
					°C		-			ppt		%		mg/L		NTU		mg/L						
					Value	Average	Value	Average	Value	Average	Value	Average	Value	Average	Value	Average	Value	Average	Value	Average				
1/2/16	17:08	Cloudy	Middle	4	15.40	15.40	15.35	8.37	8.37	8.39	30.24	30.24	30.26	87.3	86.6	86.4	7.27	7.20	7.19	9.99	9.97	9.96	4	4.50
	17:10		Middle	4	15.30	15.30		8.41	8.41		30.27	30.27		86.0	85.8		7.16	7.14		9.96	9.93		5	
3/2/16	20:40	Cloudy	Middle	3	15.40	15.40	15.35	8.64	8.64	8.64	27.26	27.26	27.27	72.8	72.7	72.7	6.18	6.17	6.17	9.55	9.62	9.63	3	2.50
	20:41		Middle	3	15.30	15.30		8.63	8.63		27.28	27.28		72.7	72.5		6.17	6.16		9.69	9.66		2	
5/2/16	22:58	Fine	Middle	3	15.40	15.40	15.40	8.59	8.59	8.58	26.59	26.59	26.56	70.1	70.3	70.5	5.95	5.97	5.99	10.53	10.23	10.29	2	2.50
	22:59		Middle	3	15.40	15.40		8.56	8.56		26.53	26.53		71.0	70.5		6.04	6.00		10.21	10.18		3	
11/2/16	13:34	Fine	Middle	4	17.50	17.50	17.55	8.38	8.38	8.39	30.13	30.13	30.12	87.6	86.6	86.0	6.97	6.89	6.84	9.79	9.79	9.79	<2	<2
	13:36		Middle	4	17.60	17.60		8.40	8.40		30.10	30.10		85.1	84.7		6.77	6.74		9.79	9.77		<2	
13/2/16	14:47	Fine	Middle	4	19.30	19.30	19.35	8.37	8.37	8.37	27.57	27.57	27.53	78.3	78.0	77.7	6.13	6.10	6.08	11.15	11.15	11.15	3	3.50
	14:49		Middle	4	19.40	19.40		8.37	8.37		27.49	27.49		77.7	76.8		6.08	6.01		11.15	11.15		4	
15/2/16	16:47	Rainy	Middle	3	15.50	15.50	15.45	8.41	8.41	8.42	28.87	28.87	28.88	92.9	91.7	91.7	7.77	7.68	7.68	9.77	9.73	9.74	6	6.00
	16:49		Middle	3	15.40	15.40		8.42	8.42		28.88	28.88		91.4	90.8		7.65	7.60		9.72	9.72		6	
17/2/16	20:20	Cloudy	Middle	3	15.60	15.60	15.60	8.60	8.60	8.58	27.84	27.84	27.84	76.7	76.7	76.8	6.44	6.44	6.46	8.76	8.73	8.72	2	2.50
	20:21		Middle	3	15.60	15.60		8.56	8.56		27.84	27.84		76.9	77.0		6.47	6.47		8.64	8.74		3	
19/2/16	22:07	Cloudy	Middle	3	16.10	16.10	16.10	8.56	8.56	8.56	27.88	27.88	27.88	64.6	64.4	64.4	5.37	5.36	5.35	8.87	8.94	8.79	4	4.00
	22:08		Middle	3	16.10	16.10		8.55	8.55		27.88	27.88		64.3	64.1		5.35	5.33		8.90	8.43		4	
22/2/16	17:15	Cloudy	Middle	3	16.30	16.30	16.35	8.45	8.45	8.47	29.94	29.94	29.94	95.1	95.8	94.5	7.77	7.83	7.72	7.24	7.22	7.22	4	3.50
	17:17		Middle	3	16.40	16.40		8.48	8.48		29.94	29.94		94.4	92.6		7.72	7.56		7.21	7.21		3	
24/2/16	14:12	Fine	Middle	4	15.80	15.80	15.75	8.39	8.39	8.42	30.10	30.10	30.31	95.1	93.4	93.2	7.85	7.71	7.69	3.58	3.63	3.75	5	5.50
	14:14		Middle	4	15.70	15.70		8.45	8.45		30.51	30.51		92.4	91.8		7.62	7.58		3.93	3.84		6	
26/2/16	13:09	Fine	Middle	4	16.40	16.40	16.50	8.40	8.40	8.42	27.25	27.25	27.22	89.3	87.9	87.1	7.40	7.29	7.21	8.49	8.49	8.48	4	4.50
	13:11		Middle	4	16.60	16.60		8.43	8.43		27.19	27.19		86.7	84.5		7.18	6.98		8.43	8.49		5	
29/2/16	16:06	Fine	Middle	4	18.30	18.30	18.45	8.27	8.27	8.30	27.13	27.13	27.08	85.7	84.6	85.1	6.82	6.71	6.76	9.03	9.04	9.04	12	11.50
	16:08		Middle	4	18.60	18.60		8.32	8.32		27.02	27.02		85.1	84.8		6.77	6.75		9.04	9.04		11	



Graphic Presentation of Water Quality Result of M5B - Central Cooling Water Intake Groups





Graphic Presentation of Water Quality Result of Culvert J - Reference Station

